



OTTO BIKES
makes IT easy

Created by



**in4MD Service GmbH /
Otto Bikes Model Company**

 +49-175-5549676

 info@ottobikes-modelcompany.com

 www.ottobikes-modelcompany.com
www.in4md-service.de

Training Material - Information

Target Groups

- Beginner

Learning Objectives

You're able to

- Reflect the history and backgrounds of ERP and S/4HANA
- Name the basic functions and release strategy of S/4HANA
- Gain essential knowledge of IT basics in S/4HANA
- Get an overview of the move from ERP to S/4HANA

Agenda



1

ERP - Historical Overview



2

Introduction to SAP S/4HANA



3

IT Basics in SAP S/4HANA



4

Transition from ERP to SAP S/4HANA

Agenda



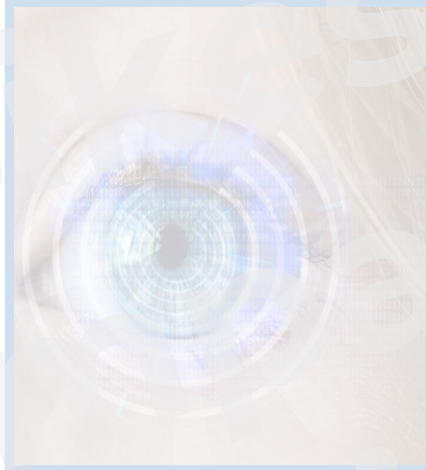
1

ERP - Historical Overview



2

Introduction to SAP S/4HANA



3

IT Basics in SAP S/4HANA



4

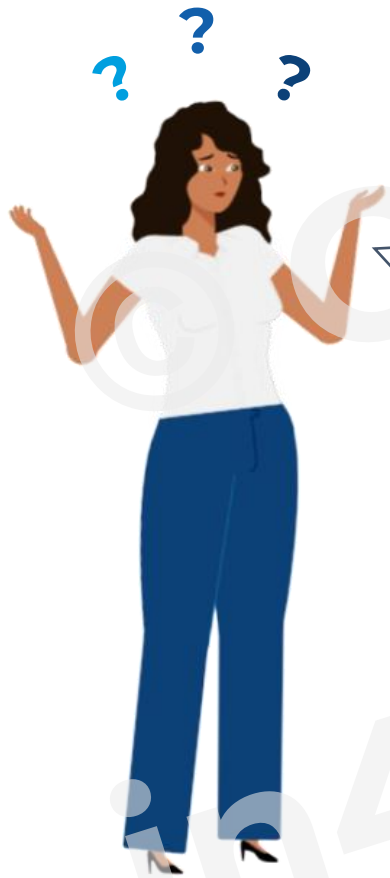
Transition from ERP to SAP S/4HANA

Shortcuts

- **SAP: “System Analysis Program Development”**
- **ERP: Enterprise Resource Planning**
- **HANA: High Performance Analytical Appliance**
- **R: real-time** (as in R/1, R/2, R/3)
- **S: Suite** (as in S/4HANA)

Pronunciation: S-A-P, not “Sap”

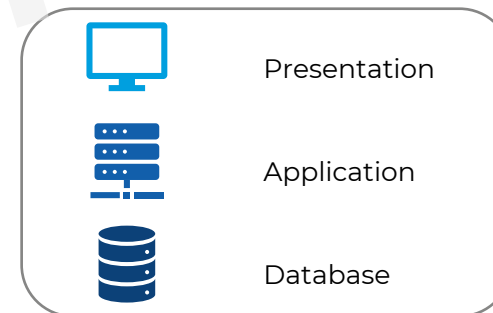
The ERP Journey - A Historical Overview



Have you ever wondered how the journey from R1 to SAP S/4HANA went?

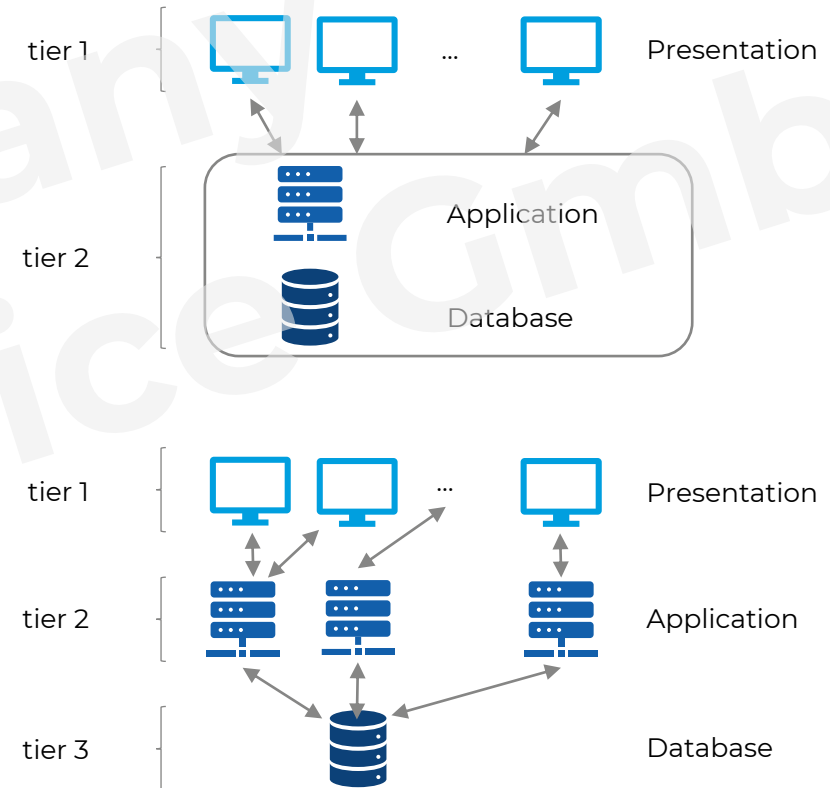
- **1972:** Founding of SAP
 - Start with Materials Management (RM) and Accounting (RF)
 - Planned from the beginning as a standardized & integrated platform
- **1973:** Introduction to SAP R/1
 - 1-tier architecture: three layers of software stored in a single system)

Client tier



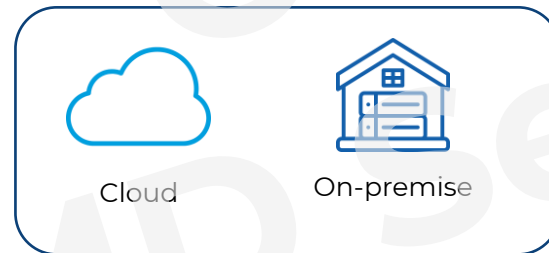
The ERP Journey - A Historical Overview

- Development of a new type of data processing: Online Transaction Processing (OLTP)
- **1980s:** Rise of the 2nd Generation SAP R/2
 - 2-tier architecture: application and data layer bank layer on one system, presentation layer layer on a second system
- **1990s:** Introduction of R/3
 - 3-tier architecture: all three layers on different systems



The ERP Journey - A Historical Overview

- **2010:** Introduction of the SAP HANA database (own in-memory database)
 - Focus on mobile and database technologies and the cloud
- **2015:** 4th & latest ERP generation based on SAP HANA database:
SAP S/4HANA
 - **SAP's Business Suite for HANA**
 - Different naming than before (R/1, R/2, R/3), but still an ERP system
 - Available:



Hybrid

The Evolution of Enterprise Software

Technology Trends

1970 from batch to interaction	1980 Real time standard software	1990 Client Server Architecture	2000 Internet and mobile	2010 In-Memory Computing	End of 2010 Digital Network & Intelligence	2022+ Interaction to Outcome
---	--	--	---------------------------------------	---------------------------------------	--	---

Business Trends

Business Process Reengineering

Industry 4.0

Everything-as-a-service

Globalization

ESG/ Sustainability

Internet

Remote work & virtual collaboration

Agenda



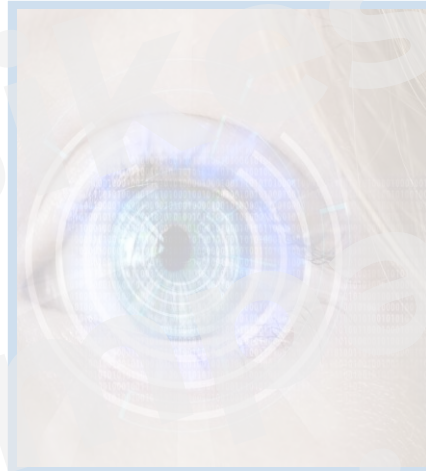
1

ERP - Historical Overview



2

Introduction to SAP S/4HANA



3

IT Basics in SAP S/4HANA



4

Transition from ERP to SAP S/4HANA

What is an SAP system at all?

- Market leading business process management software
- SAP Software...
 - ... connects people, business networks and technology
 - ... works with real-time data
 - ... efficiently manages complex business processes
 - ... stands for simplification and innovation



S/4HANA – the next generation of ERP software

SAP S/4HANA:

- Enables companies to support and optimize their business processes
- Process data volumes in real time
- Processes centralized master data for partners, customers, and suppliers
- Includes modules for all core lines of business:
 - Procurement
 - Production
 - Materials Management
 - Sales and Distribution
 - Finance
 - Human Resources
 - And so on...



SAP S/4HANA Release Strategy



**Interested?
Contact us!**

info@ottobikes-modelcompany.com

- **2015:** SAP publishes new releases during the first half of the year. Two digits represent the first and second representation of the release
- **2018:** SAP releases new releases annually in September
- **2020:** Release Named by Year
- **2023:** Transition to a 2-year release cycle as of SAP S/4HANA 2023
 - Multiple deliveries of enhancement packages during the year

